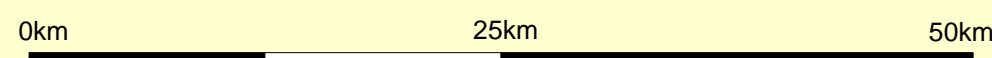


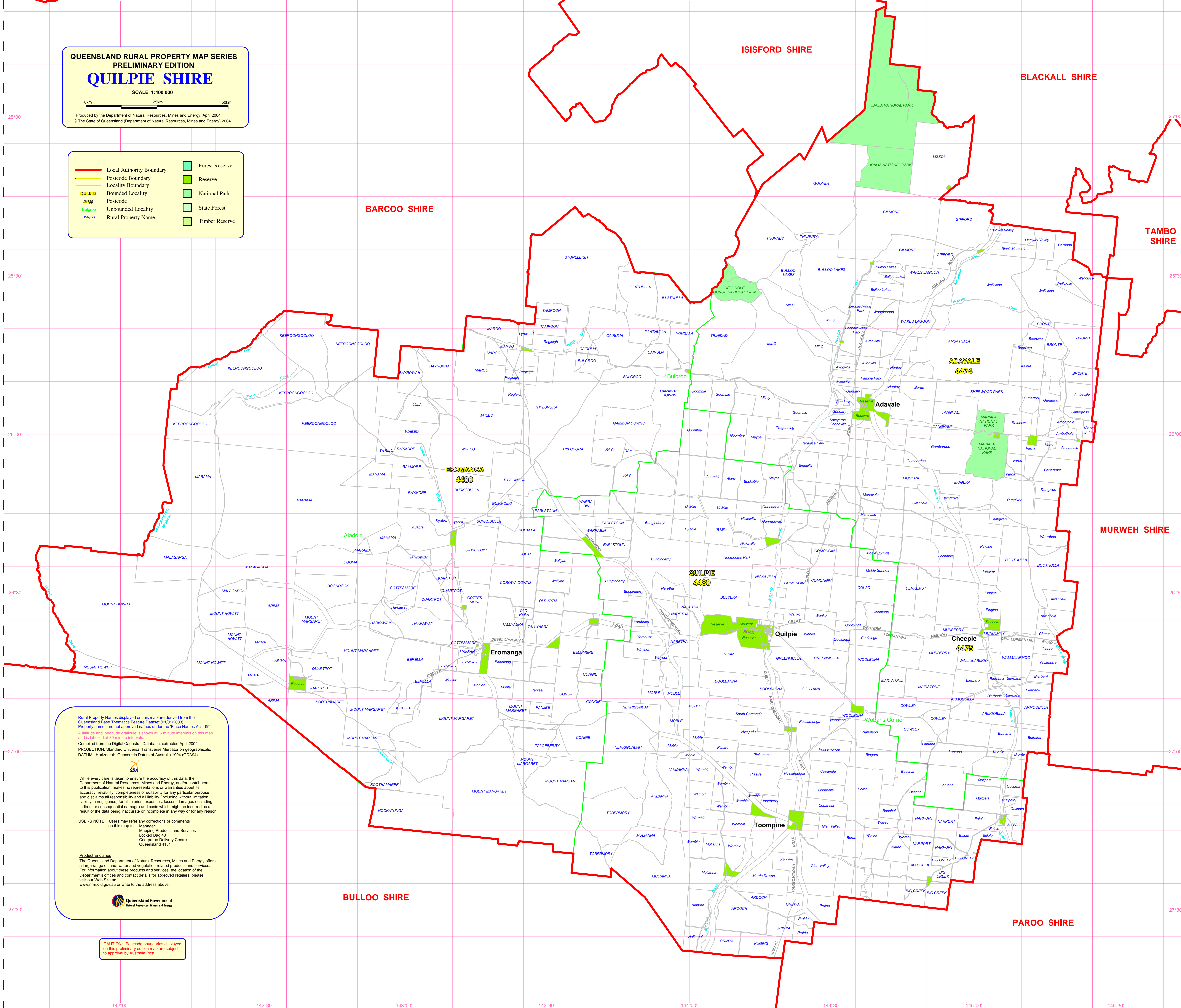
QUEENSLAND RURAL PROPERTY MAP SERIES
PRELIMINARY EDITION
QUILPIE SHIRE

SCALE 1:400 000



Produced by the Department of Natural Resources, Mines and Energy, April 2004.
© The State of Queensland (Department of Natural Resources, Mines and Energy) 2004.

- | | |
|--------------------------|----------------|
| Local Authority Boundary | Forest Reserve |
| Postcode Boundary | Reserve |
| Locality Boundary | National Park |
| Bounded Locality | State Forest |
| Postcode | Timber Reserve |
| Unbounded Locality | |
| Rural Property Name | |



Rural Property Names displayed on this map are derived from the Queensland Base Thematic Feature Dataset (01/01/2003). Property names are not approved names under the Place Names Act 1994. A latitude and longitude graticule is shown at 5 minute intervals on this map and is labelled at 30 minute intervals.
Compiled from the Digital Cadastral Database, extracted April 2004.
PROJECTION: Standard Universal Transverse Mercator on geographicals.
DATUM: Horizontal - Geocentric Datum of Australia 1994 (GDA94)

While every care is taken to ensure the accuracy of this data, the Department of Natural Resources, Mines and Energy, and/or contributors to this publication, makes no representations or warranties about its accuracy, reliability, completeness or suitability for any particular purpose and disclaims all responsibility and all liability (including without limitation, liability in negligence) for all injuries, expenses, losses, damages (including indirect or consequential damage) and costs which might be incurred as a result of the data being inaccurate or incomplete in any way or for any reason.

USERS NOTE - Users may refer any corrections or comments on this map to: Manager Mapping Products and Services Locked Bag 40 Coorparoo Delivery Centre Queensland 4151

Product Enquiries
The Queensland Department of Natural Resources, Mines and Energy offers a large range of land, water and vegetation related products and services. For information about these products and services, the location of the Department's offices and contact details for approved retailers, please visit our Web Site at: www.nrm.qld.gov.au or write to the address above.



CAUTION: Postcode boundaries displayed on this preliminary edition map are subject to approval by Australia Post.