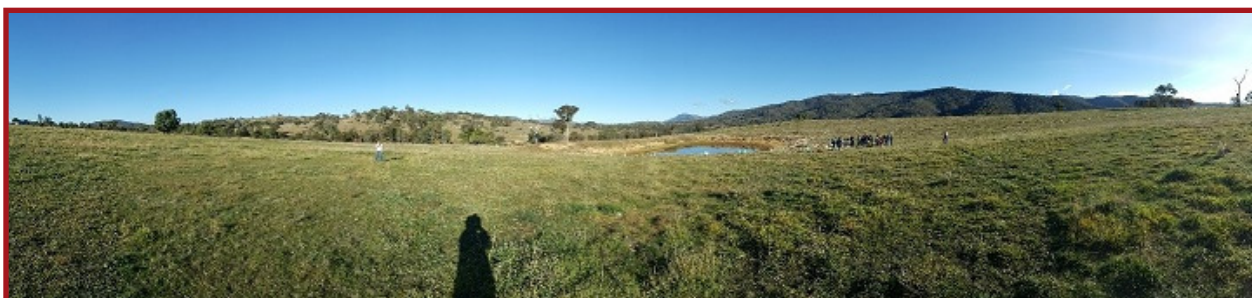


## RLF National Conference – Canberra

During May our Regional Landcare Facilitator (RLF), Darren Jennings, attended the National Conference for RLFs in Canberra. Apart from being a little chilly, Darren reported that the conference was a very worthwhile experience - he networked with other RLF's and picked up lots of ideas to bring back to South West Queensland graziers.

Part of the conference consisted of property tours on the outskirts of Canberra, which examined erosion issues on a horse agistment property, cell grazing on a beef cattle property and weed eradication on a beef cattle property. Darren was also asked to present a summary of the activities and tools that all RLF's in Queensland utilise to assist with practices for on farm management of ground cover, soils and water quality. This presentation was very well received by all attendees and generated discussion around the use of Grazing BMP, NRM Spatial Hub and land manager led events.

The RLF's were also addressed by the Assistant Minister to the Deputy Prime Minister, the Honorary Luke Hartsuker MP on the latest budget announcements about the National Landcare Programme and things look very positive on this front. One other interesting presentation was from Cam Nicholson on what drives our decision making. Decisions were categorised as simple, complicated, complex or chaotic; and most land manager decision making is categorised as complex (multiple pieces of information which are variable and have multiple outcomes). Complex decisions involve our head, heart and gut. By better understanding land managers' thinking processes, RLFs can then tailor information that will assist them to make better decisions.



Above: Cell grazing and erosion management.



Above: Tackling African Love Grass by over sowing with forage oats.



Above: Managing erosion on horse agistment land.