

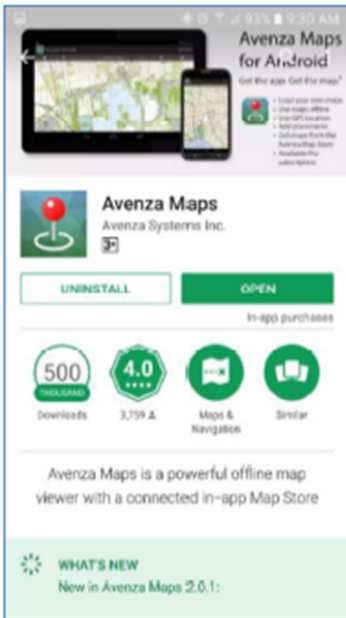
Can I get NRM Spatial Hub on my GPS, Phone or Tablet?



Did you know that you can take your published maps from NRM Spatial Hub and put them on your devices? This will then allow you to see where you are in the paddock in relation to your map - a great idea for contractors, employees and backpackers.

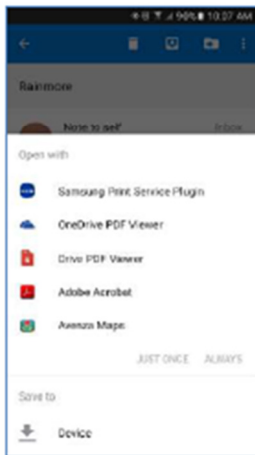
Refer to page 40 (see screenshot below) of the latest NRM Spatial Hub User Guide for details on how to transfer your maps to your phone or tablet - the User Guide is also available online if you haven't got a copy. [Click here](#) to download (approx. 6MB).

Loading Published maps to your smart phone or tablet



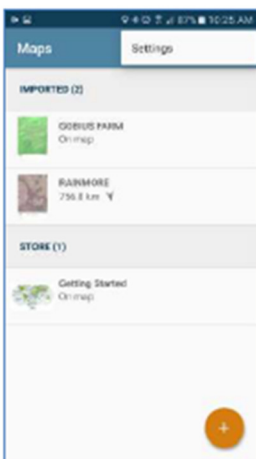
Published maps from the Hub are georeferenced meaning that they have real-world coordinates assigned to each pixel of them.

A free App can be downloaded and installed on your mobile device called 'Avenza Maps Mobile'.

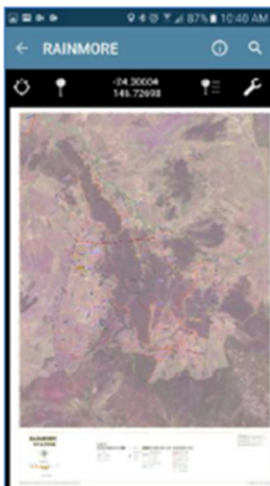


Email or transfer (via a cable) your published map to your mobile device and then open up the Avenza Maps App. If you have emailed it then click on the pdf map file to download it to your device.

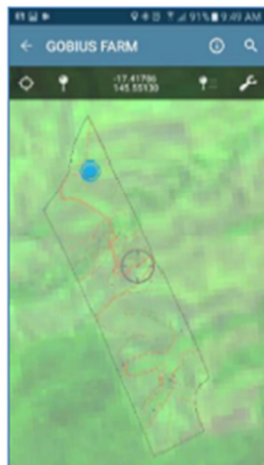
Once down-loaded, click on the pdf map file in your email again and select to open with 'Avenza Maps'



The Avenza Maps App should open with a list of Maps that you have imported.



Click on the map that you want loaded and it will come up on the screen.



If you are physically located on the farm your location will come up on the screen as a blue circle that will follow you around as you move.

You don't need mobile network or wifi reception for this to occur, you just need to ensure that you phone location and GPS is enabled.